



1 Grange Park Court

M1 JUNCTION 15 | NORTHAMPTON | NN4 5EA

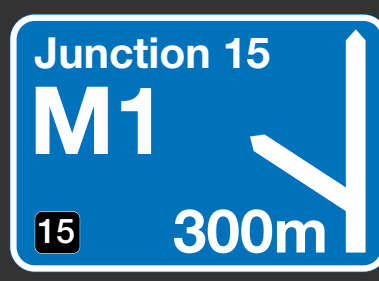
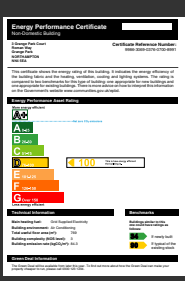


HIGH QUALITY SELF CONTAINED FIRST FLOOR OFFICE SUITE TO LET

3,055 sq ft (283.8 sq m) with 15 car parking spaces

- M1 motorway (J15) 1/4 mile
- Comfort cooling
- LG3 category 2 lighting
- Raised access floors





Location

Grange Park is located at Junction 15 of the M1 motorway at Northampton. It is well served with a district centre containing a Co-op Supermarket, Doctors Surgery, Dentist and Nursery together with a Holiday Inn and Public House.

Nearby facilities include Collingtree Park Golf Club, Delapre Golf Club, Hilton Hotel, Marriott Hotel, Tesco Superstore and Virgin Health Club. Adjoining occupiers include BIS, Wilson Browne and a number of other professional occupiers.

Description

1 Grange Park Court comprises a detached two storey office building with attractive brick elevations and double glazing.

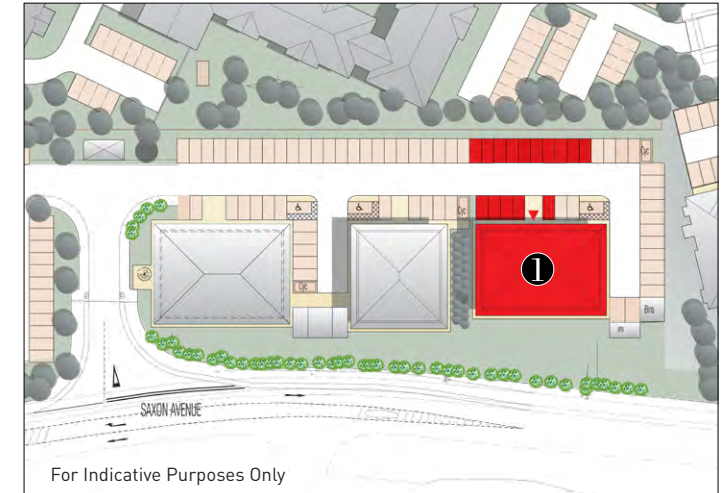
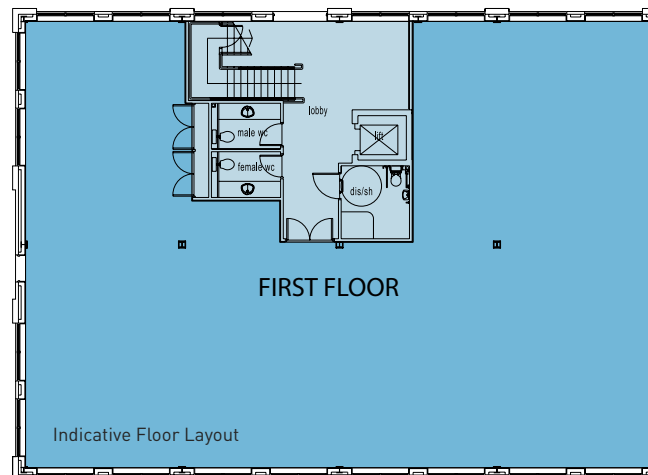
The available accommodation is on the first floor and provides high quality office space benefiting from the following features:

- Comfort cooling
- Suspended ceilings
- LG3 category 2 lighting
- Double glazing
- Raised floors
- IT ducting
- Full carpeting to offices
- 15 car parking spaces
- EPC Rating - D100



Accommodation (approx NIA)

First Floor 3,055 sq ft (283.8 sq m)



Terms

The vacant accommodation is available by way of a new full repairing and insuring lease on terms to be agreed. Rent and further information on application.

Viewing

For viewing arrangements and further information, please contact:

Chris Drummond



www.tdbre.co.uk

chris@tdbre.co.uk

DISCLAIMER: TDBRE for themselves and for the vendors or lessors of the property whose agents they are give notice that, (i) these particulars are given without responsibility of TDBRE or the Vendors or Lessors as a general outline only, for the guidance of prospective purchasers or tenants, and do not constitute the whole or any part of an offer or contract; (ii) TDBRE cannot guarantee the accuracy of any description, dimension, references to condition, necessary permissions for use and occupation and other details contained herein and any prospective purchasers or tenants should not rely on them as statements or representations of fact but must satisfy themselves by inspection or otherwise as to the accuracy of each of them; (iii) no employee of TDBRE has any authority to make or give any representation or enter into any contract whatsoever in relation to the property; (iv) VAT may be payable on the purchase price and / or rent, all figures are exclusive of VAT, intending purchasers or lessees must satisfy themselves as to the applicable VAT position, if necessary by taking appropriate professional advice; (v) TDBRE will not be liable, in negligence or otherwise, for any loss arising from the use of these particulars. 01/21.